



**Chief Executive**

**Executive Director (Children and Young People)**

- Director (Children's Social Care)
- Director (Children's Prevention and Integration)
- Director (Education and Inclusion)

**Executive Director (Place)**

- Director (Development and Infrastructure)
- Director (Neighbourhoods)

**Executive Director (Resources & Partnerships)**

- Director (Corporate Support)

**Assistant Chief Executive**

**Executive Director (Health and Adult Social Care)**

- Director (Adult Social Care and Commissioning)
- Director (Public Health)

# Assistant Chief Executive

Head of Assurance and Delivery

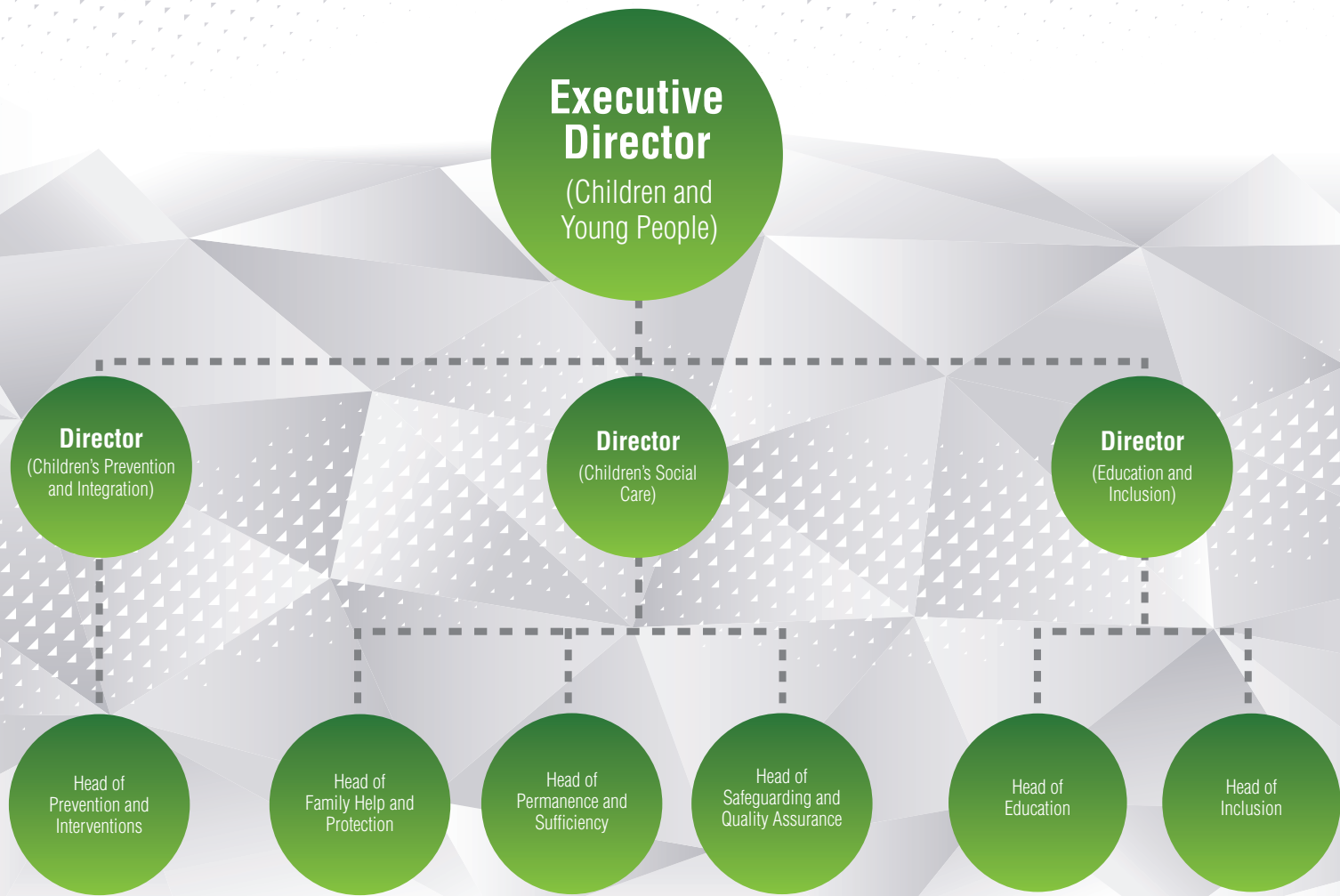
Head of Assurance and Delivery

Head of Legal Services and Information Governance

Head of Democratic Services and Business Support

Head of Communications

Head of Community Safety



**Executive Director**  
(Health and Adult Social Care)

**Director**  
(Adult Social Care and Commissioning)

**Director**  
(Public Health)

Head of  
Adult Social Care

Head of  
Provider Services

Head of  
Safeguarding and  
Quality Assurance

Head of  
Whole Life  
Commissioning

Consultant in  
Public Health

Consultant in  
Public Health

**Executive Director**  
(Place)

**Director**  
(Neighbourhoods)

**Director**  
(Development and Infrastructure)

Head of Commercial Services  
(FM and FLMS)

Head of Waste and Streetscene Services

Head of Safety, Resilience and Community Protection

Head of Housing and Property

Head of Business Growth

Head of Employment Initiatives

Head of Planning and Building Control

Head of Highways and Capital Delivery

Head of Major Development Team

**Executive Director**  
(Resources & Partnerships)

**Director**  
(Corporate Support)

Head of Workforce

Head of Customer Services

Head of IT

Head of Policy and Performance

Head of Scrutiny, Procurement and Project Support

Head of Assets

Head of Exchequer

Head of Finance

Head of Communities